



# JuDa Wire Mesh Co., Ltd

## Contact Us

The company commitment to quality, integrity and service

Juda Hardware Wire Mesh Co.,Ltd is located in Anping, Hebei, which is the "Home of Wire Netting" in China.

We have advanced management experience, production process and quality control measures to ensure high quality products are provided to our customers. In our emphasis on product quality, we also actively communicate with customers, understand customer needs, aware of our deficiencies, and provide professional and timely service. Our factory follows the policy of "superior quality, low price", to get the customers' approval and long term business.

Our company mainly deal with all kinds of Perforated Metal Mesh, including Stainless Steel Perforated Metal Mesh, Steel Perforated Metal Mesh, Galvanized Steel Perforated Metal Mesh, Aluminum Perforated Metal Mesh, Copper Phosphor Brass Bronze Perforated Metal Mesh, Titanium Perforated Metal Mesh, Decorative Perforated Metal Mesh etc, which are widely used in, Railways, public works equipment and agricultural machinery, Energy and electrical, Building industry and other daily use fields. Our products are well sold exported to Europe, America, Australia, Middle East, Africa and other countries.

With full range of products, excellent quality and the user's trust, We have achieved a good reputation in the wire mesh market. Juda Wire Mesh Co.,Ltd. sincerely welcomes customers worldwide to negotiate business with us and is always ready to join hands with you creating a better tomorrow!

Quality: Never be second best, always produce the highest-quality products and make them right every time.

Customer service: We exist to satisfy our customers' needs. All departments in juda Corporation live by this principle.

Innovation: Never stop improving our products to better satisfy our customer's needs.

New products: Seek out or invent new products for the businesses we serve.

Care for our people: As a The company, we must always consider the needs of our employees. The success of juda Corporation is a result of their efforts, skills and performance.

**TEL: +86-318-7965826**

**FAX: +86-318-7965926**

**E-mail :[info@wireclothchina.com](mailto:info@wireclothchina.com) [Http:// www.wireclothchina.com](http://www.wireclothchina.com)**



**TEL: +86-318-7965826 FAX: +86-318-7965926**



**E-mail :[info@wireclothchina.com](mailto:info@wireclothchina.com) [Http:// www.wireclothchina.com](http://www.wireclothchina.com)**

TO DEVELOP WITH PIONEERING SPIRIT  
TO WIN WITH OUTSTANDING QUALITY



**对外贸易经营者备案登记表**

备案登记编号: 00880334 进出口企业代码: 1300693422157

经营者中文名称	安平县聚达五金丝网有限公司		
经营者英文名称	ANPING JUDA HARDWARE WIRE MESH CO., LTD		
组织机构代码	693472157	经营类型	有限责任公司
住所	安平县王胡林村南		
经营场所(中文)	河北省安平县王胡林村南		
经营场所(英文)	SOUTH OF WANGHULIN VILLAGE, ANPING, HEBEI		
联系电话	0318-7026369	联系传真	0318-8066369
邮政编码	051000	电子邮箱	INFO@WIRECLOTH.CHINA.COM
工商登记注册日期	2009-08-18	工商登记注册号	131125000010454

依法办理工商登记的企业还须填写以下内容

企业法定代表人姓名	陈双燕	有效证件号	13112519792149008
注册资金	壹佰万元		

依法办理工商登记的范围(地区): 企业或个体工商户(除经营者) 还须填写以下内容

企业法定代表人/个体工商户负责人姓名		有效证件号	
企业资产/个人财产			

备案登记机关: 2009年08月28日



Stainless steel Perforated metal mesh is the most durable and solid type among all materials of Perforated metal sheet. Though the cost is expensive, but the long service life and chemical stability performance is worthy for that.

Stainless steel perforated metal sheet can be used as decorative Perforated metal mesh, it can also be used as Perforated metal filter element for gas, liquid and solid filtration.

**Specification:**

Materials: stainless steel 304, 316, 316 L.

Hole Type: Round hole, square hole, hexagonal hole, Slotted hole, decorative hole.

Species: small, medium and heavy galvanizing steel Perforated metal mesh

Thickness: 0.018" - 0.315".

Hole Size: 0.02" - 1.0".

Percent Open Area: 10% - 67%.

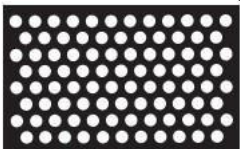
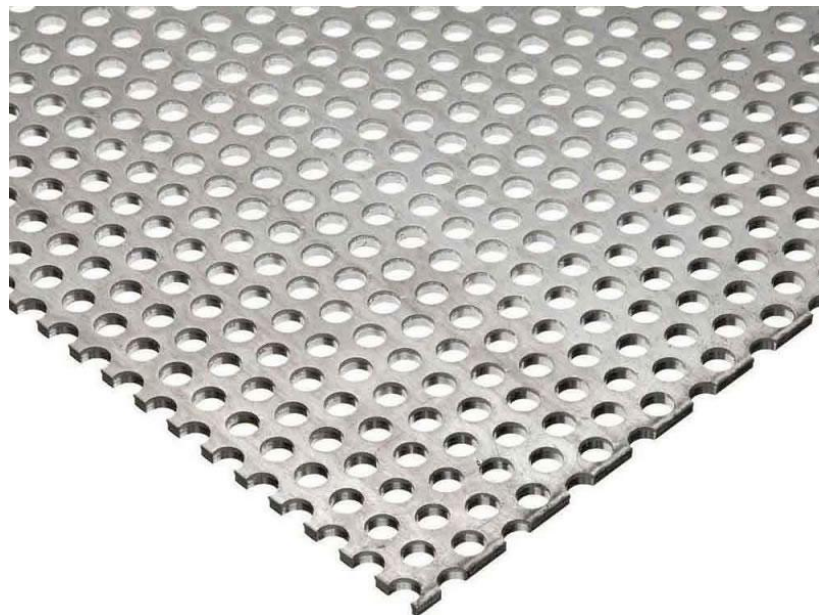
Width: 36", 40", 48", 60".

Length: 60", 78", 82", 96", 120", 150".

Perforation mode: Straight, 45°, 60° staggered pattern.

Reprocessing: Bending, rolling, welding, cutting or specified by customers.

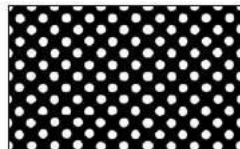
Surface treatment: polishing, etc.



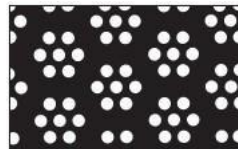
Round 60 degree staggered pitch



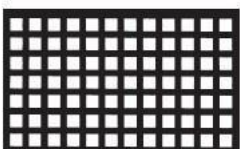
Round 90 degree pitch



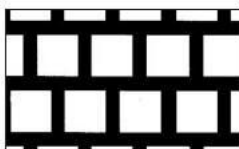
Round 45 degree pitch



Round floral pattern



Square 90 degree pitch



Square 60 degree staggered pitch



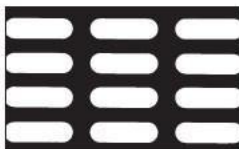
Square 45 degrees



Square Patterned



Round Ended Slotted end staggered



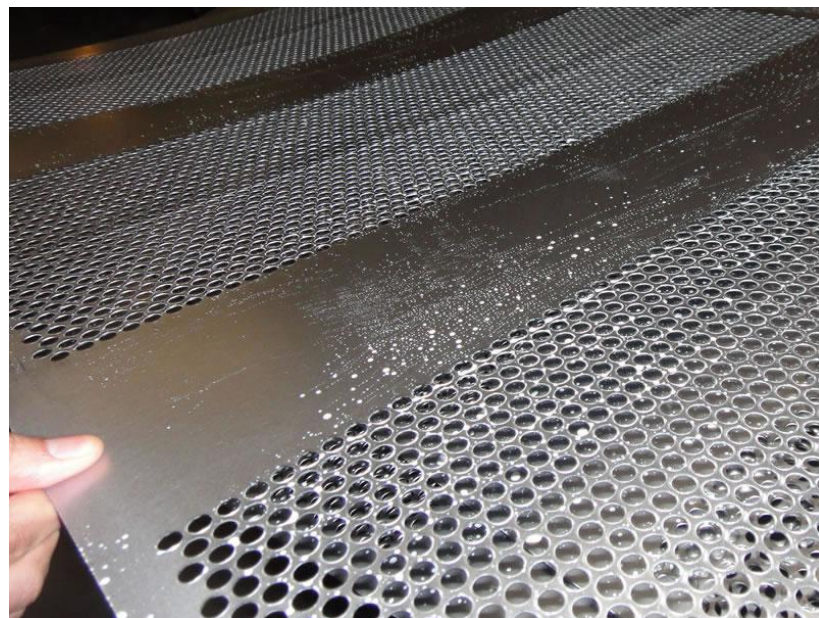
Round Ended Slotted rectangular pitch

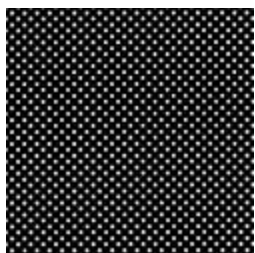


Square ended slotted side staggered

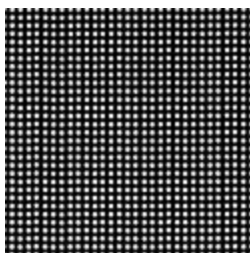


Round ended slotted side staggered at 45 degrees

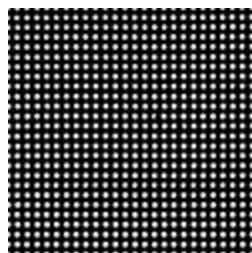




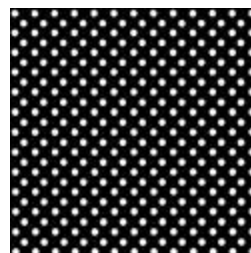
.020" dia. .043" ctrs.  
20% open area



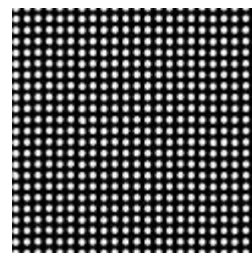
.023" dia. .042" ctrs.  
22% open area



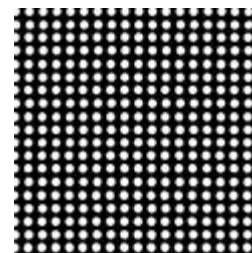
.027" dia. .050" ctrs.  
23% open area



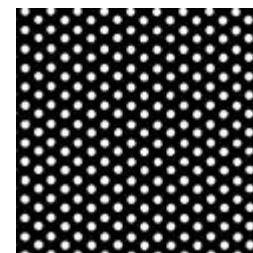
1/32" dia. 1/16" ctrs.  
23% open area



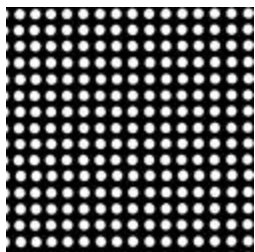
.033" dia. .055" ctrs.  
28% open area



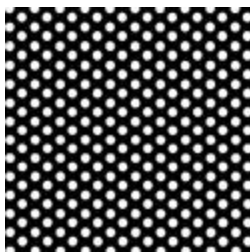
.045" dia. .066" ctrs.  
36% open area



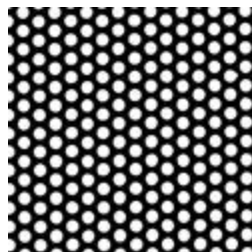
.045" dia. 5/64" ctrs.  
32% open area



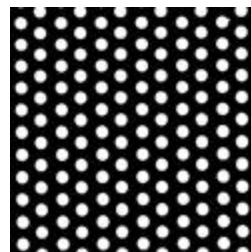
.050" dia. .083" ctrs.  
29% open area



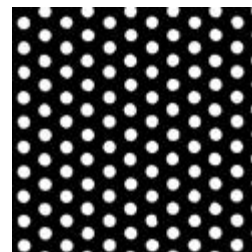
3/64" dia. 3/32" ctrs.  
23% open area



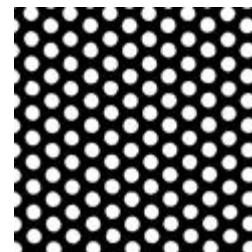
1/16" dia. 3/32" ctrs.  
41% open area



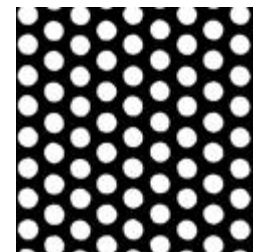
1/16" dia. 7/64" ctrs.  
27% open area



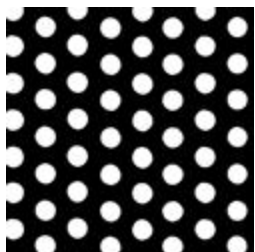
1/16" dia. 1/8" ctrs.  
23% open area



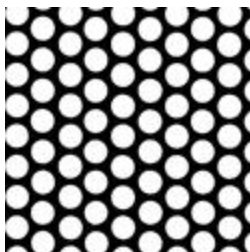
5/64" dia. 1/8" ctrs.  
36% open area



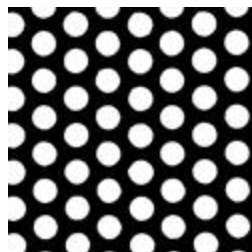
3/32" dia. 5/32" ctrs.  
33% open area



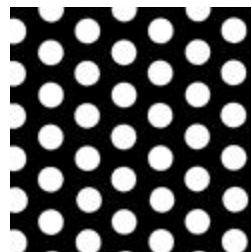
3/32" dia. 3/16" ctrs.  
23% open area



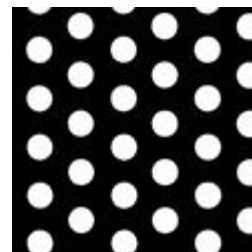
.117" dia. 5/32" ctrs.  
51% open area



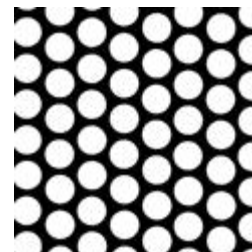
1/8" dia. 3/16" ctrs.  
40% open area



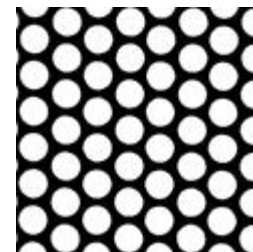
1/8" dia. 7/32" ctrs.  
30% open area



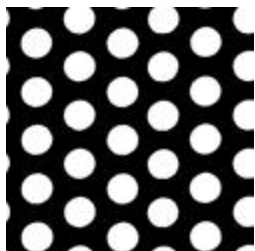
1/8" dia. 1/4" ctrs.  
23% open area



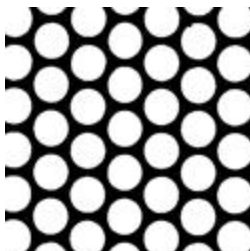
9/64" dia. 3/16" ctrs.  
51% open area



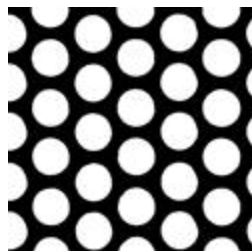
5/32" dia. 3/16" ctrs.  
63% open area



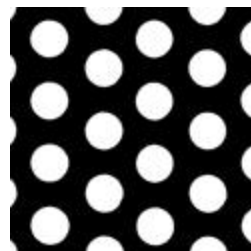
5/32" dia. 1/4" ctrs.  
34% open area



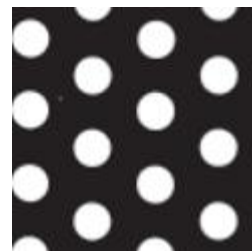
3/16" dia. 7/32" ctrs.  
67% open area



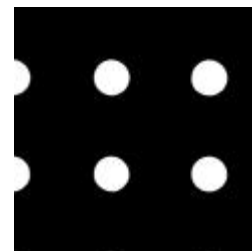
3/16" dia. 1/4" ctrs.  
50% open area



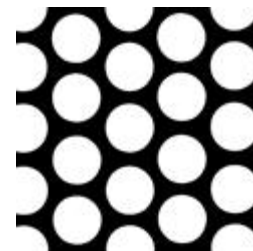
3/16" dia. 5/16" ctrs.  
32% open area



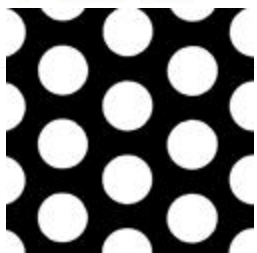
3/16" dia. 3/8" ctrs.  
23% open area



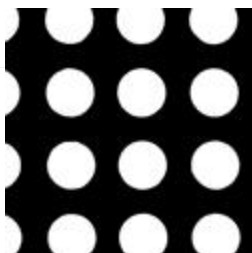
3/16" dia. 1/2" straight  
10% open area



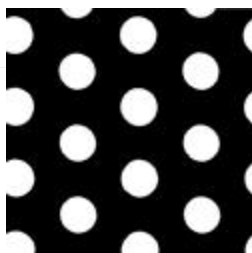
1/4" dia. 5/16" ctrs.  
58% open area



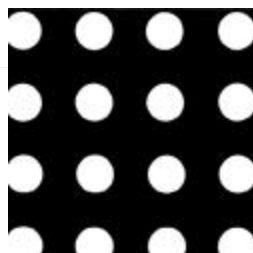
1/4" dia. 3/8" ctrs.  
42% open area



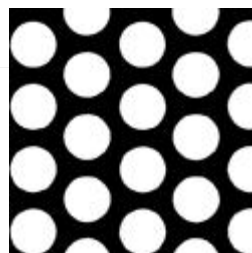
1/4" dia. 3/8" straight  
34% open area



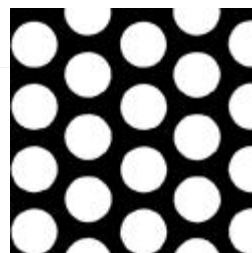
1/4" dia. 1/2" ctrs.  
23% open area



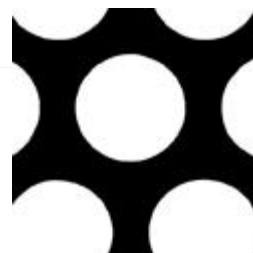
1/4" dia. 1/2" straight  
20% open area



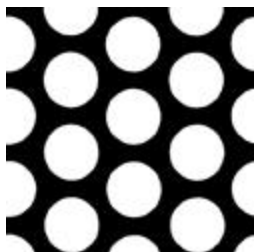
5/16" dia. 7/16" ctrs.  
46% open area



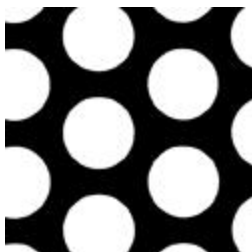
3/8" dia. 9/16" ctrs.  
40% open area



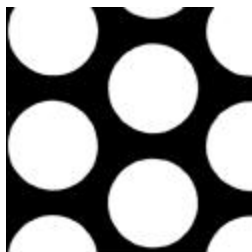
3/4" dia. 1" ctrs.  
51% open area



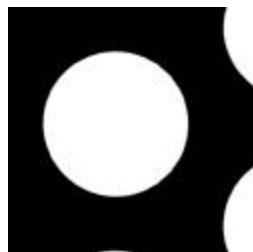
3/8" dia. 1/2" ctrs.  
52% open area



1/2" dia. 11/16" ctrs.  
48% open area

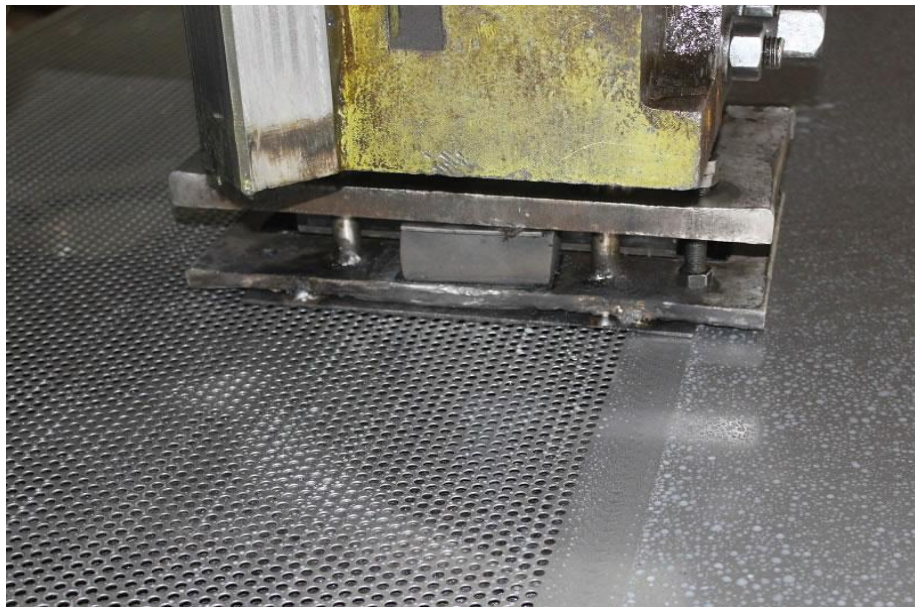


5/8" dia. 7/8" ctrs.  
46% open area



1" dia. 1-3/8" ctrs. 48%  
open area

**Images presented here are not actual sizes, they are for visual comparison only. We also manufacture other custom size panels. Trade offer presented at the individual query.**



# JUDA Steel Perforated Metal Mesh

Steel Perforated metal mesh is made of low carbon steel sheet, which is more economical and cheaper than stainless steel Perforated metal mesh or aluminum Perforated metal mesh. But the steel Perforated metal mesh is easy to corrode or rust in the harsh environment. To solve this problem, the steel Perforated metal mesh are commonly treated through galvanized or PVC coated surface. The galvanized surface treatment can be divided into electric galvanized or hot dipped galvanized. The electric galvanized steel Perforated metal is much cheaper than the hot dipped galvanized steel Perforated mesh sheet, but the service life is not so as the electric dipped galvanized Perforated metal mesh.

## Specification:

Materials: low carbon steel sheet.

Hole Type: Round hole, square hole, hexagonal hole, Slotted hole, decorative hole.

Species: small, medium and heavy galvanizing steel Perforated metal mesh

Thickness: 0.018" - 0.375".

Hole Size: 0.02" - 1.0".

Percent Open Area: 10% - 67%.

Width: 36", 40", 48", 60".

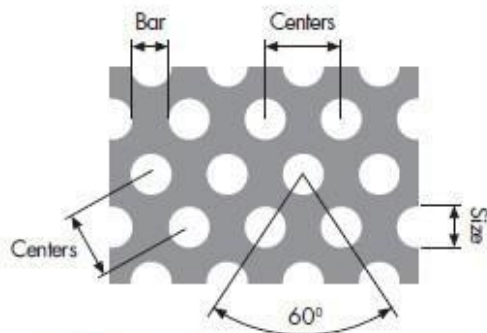
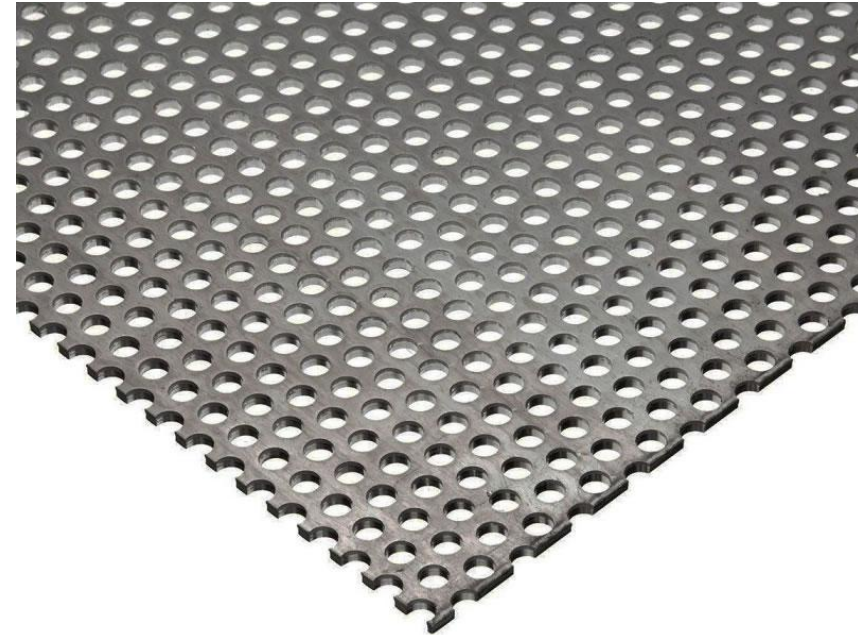
Length: 60", 78", 82", 96", 120", 150".

Perforation mode: Straight, 45°, 60° staggered pattern.

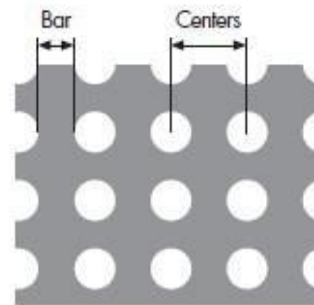
Reprocessing: Bending, rolling, welding, cutting or specified by customers.

Surface treatment: dipping galvanized or PVC coated..

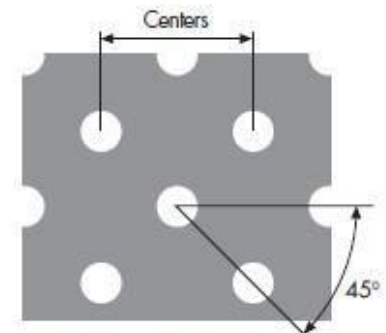
Sheet color: green, golden, pink, black and any other colors you want.



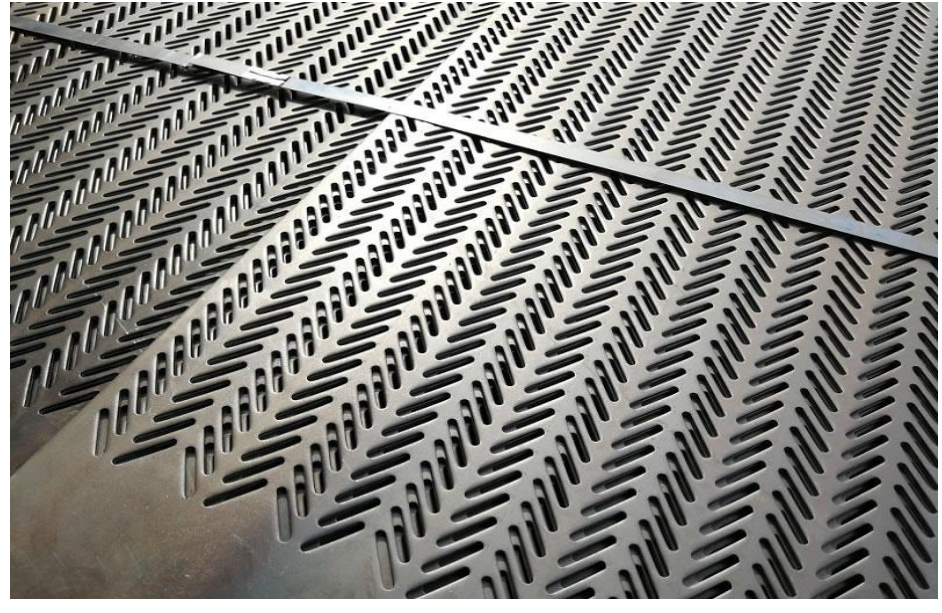
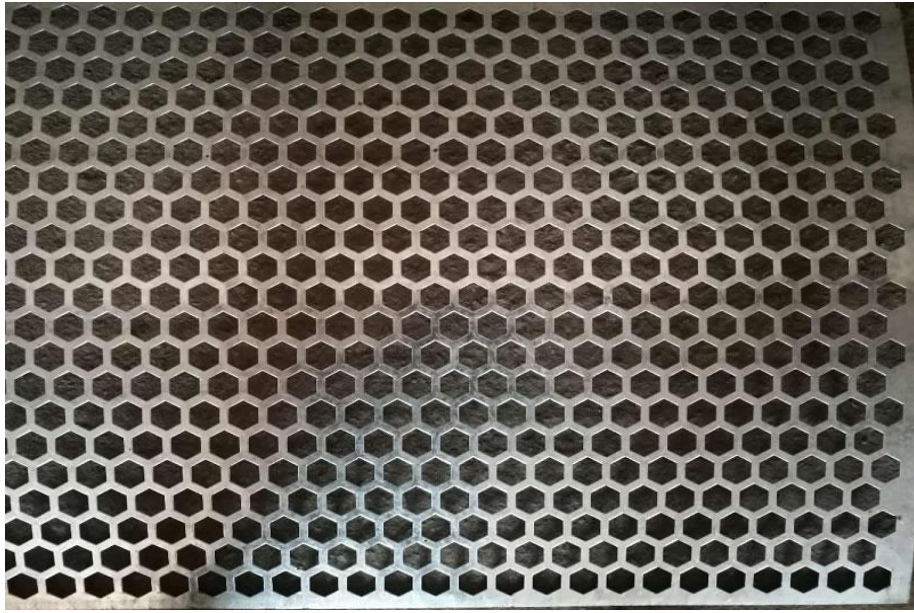
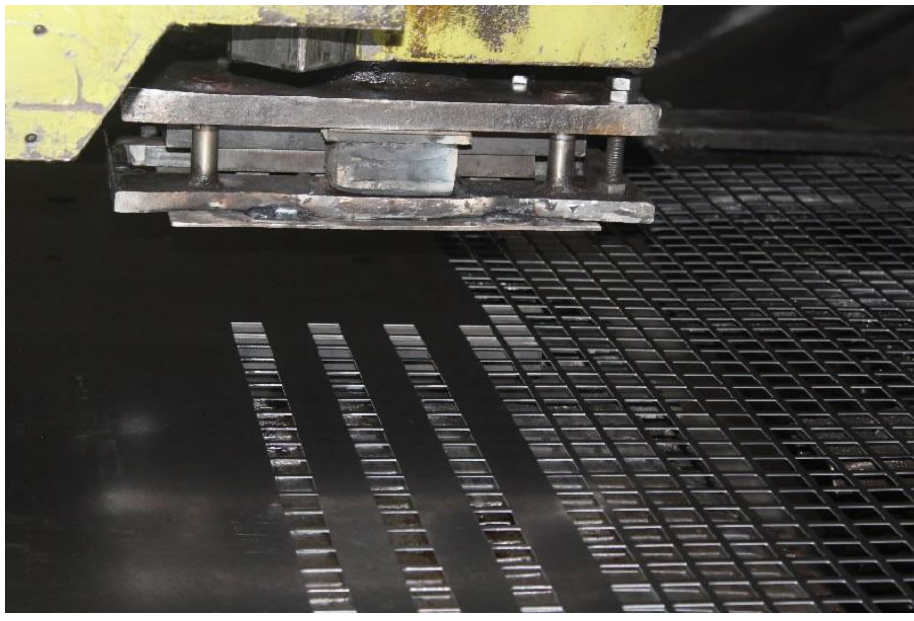
**STANDARD ROUND PERFORATIONS  
60° STAGGERED**



**STRAIGHT LINE ROUND  
PERFORATIONS**



**OPTIONAL ROUND PERFORATIONS  
45° STAGGERED**



In ordinary low carbon steel plate surface coated with a layer of metal zinc, is to prevent the steel plate surface from corrosion and prolong the service life

**Specification:**

Materials: low carbon steel sheet or galvanized Steel sheet.

Classification: cold galvanizing, hot galvanizing

Hole Type: Round hole, square hole, hexagonal hole, Slotted hole, decorative hole.

Species: small, medium and heavy galvanizing steel Perforated metal mesh

Thickness: 0.018" - 0.375"

Hole Size: 0.02" - 1.0"

Percent Open Area: 10% - 67%.

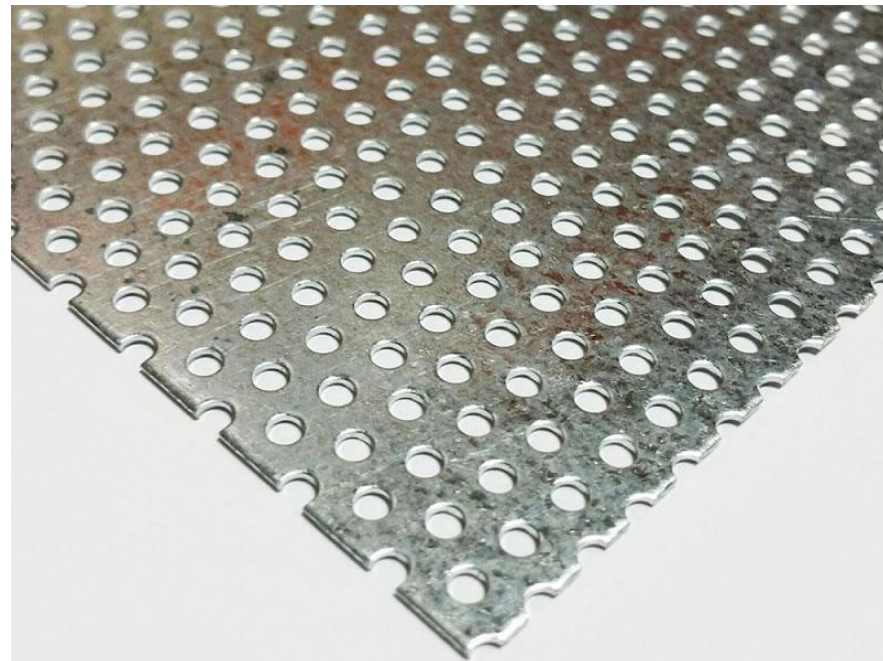
Width: 36", 40", 48", 60".

Length: 60", 78", 82", 96", 120", 150".

Perforation mode: Straight, 45°, 60° staggered pattern.

Reprocessing: Bending, rolling, welding, cutting or specified by customers.

Surface treatment: galvanized, powder coated, painted.





# JUDA Aluminum Perforated Metal Mesh

Aluminum Perforated metal mesh is much more lightweight than the steel Perforated metal mesh and stainless steel Perforated metal mesh. Aluminum Perforated metal sheet has outstanding corrosion and rust resistance, which can be used in the salty, high temperature and other harsh environments. Aluminum Perforated metal mesh is available in various colors through PVC coated surface treatment for better corrosion resistance performance. Additionally, it can be used in many more applications to let the environment more beautiful and high class.

## Specification:

Materials: Aluminum 1060, Aluminum alloy 3003, 5005, etc.

Hole Type: Round hole, square hole, hexagonal hole, Slotted hole, decorative hole.

Species: small, medium and heavy aluminum Perforated metal mesh

Thickness: 0.018" - 0.5"

Hole Size: 0.02" - 1.0"

Percent Open Area: 10% - 67%

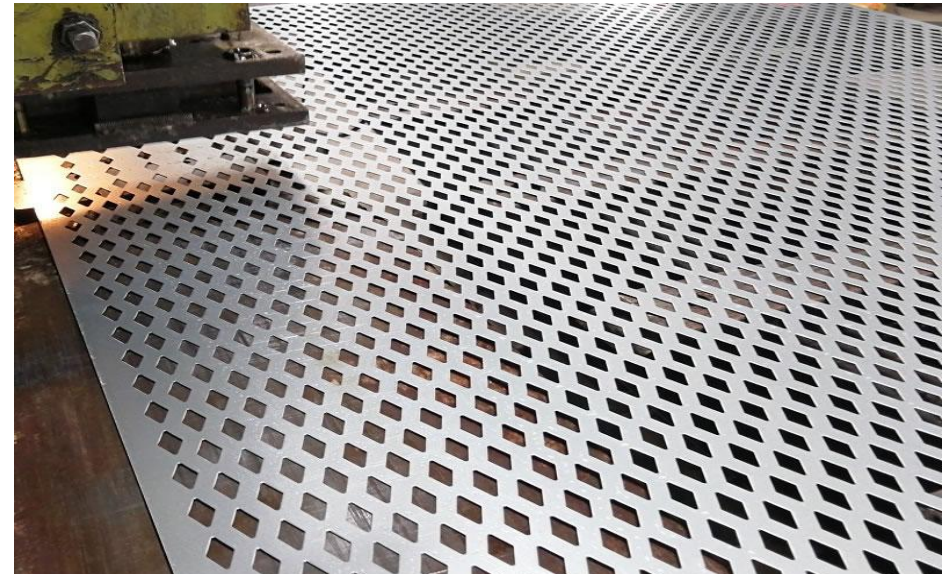
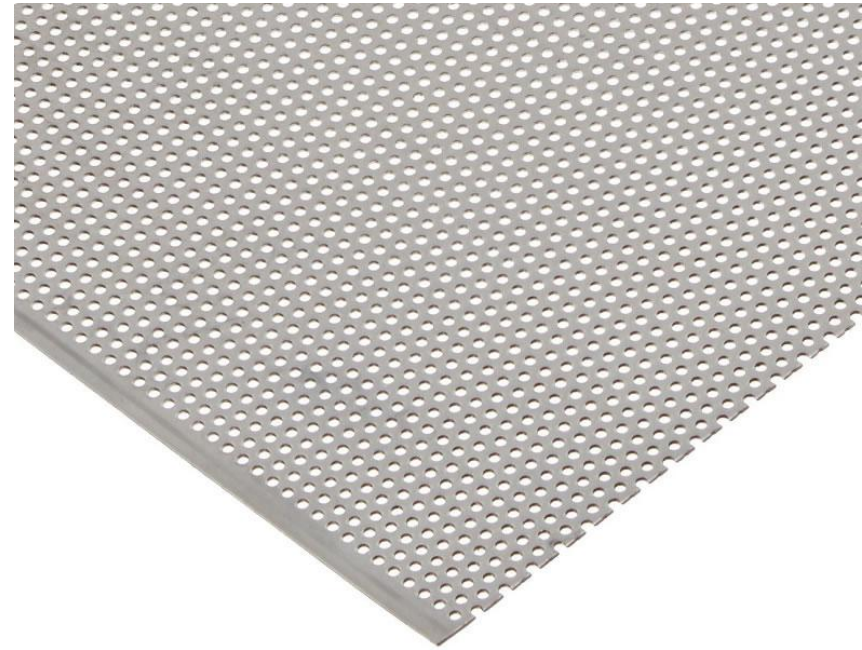
Width: 36", 40", 48", 60"

Length: 60", 78", 82", 96", 120", 150"

Perforation mode: Straight, 45°, 60° staggered pattern.

Reprocessing: Bending, rolling, welding, cutting or specified by customers.

Surface treatment: powder coated, painted, etc.



Juda manufacture more than Dozens decorative patterns – please see the gallery below. Bespoke decorative patterns are available. Perforated patterns are available in one-hole size or with a variety of different hole sizes and shapes. Bespoke patterns and pitches are designed to individual customer's requests.

Materials: Mild Steel, Aluminium, Stainless Steel, Galvaised Steel, Corten, Brass, Copper, Zinc, Titanium, Certain Plastics upon Request.

Surface treatment: powder coated, painted, galvanising and anodising etc.

Feature:

High security with fireproof and explosion proof.

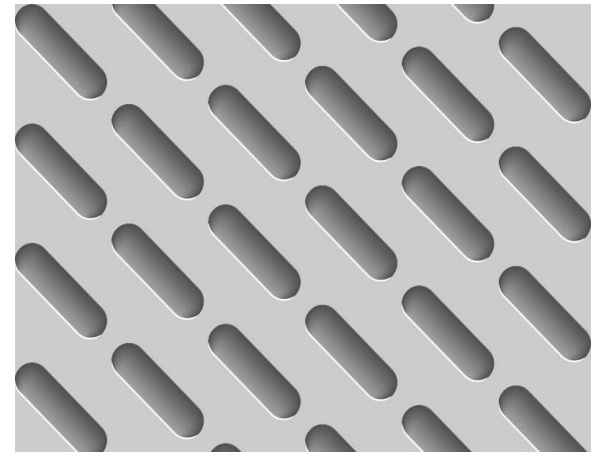
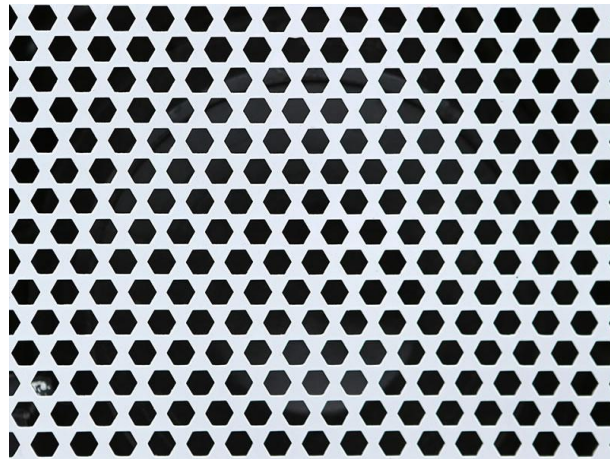
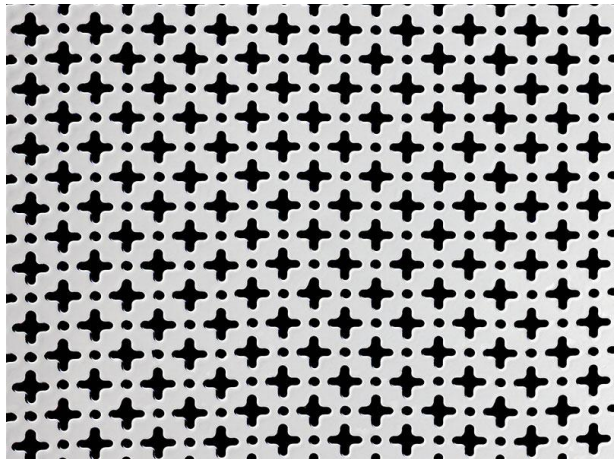
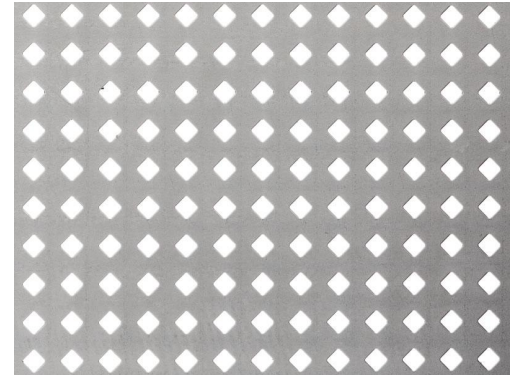
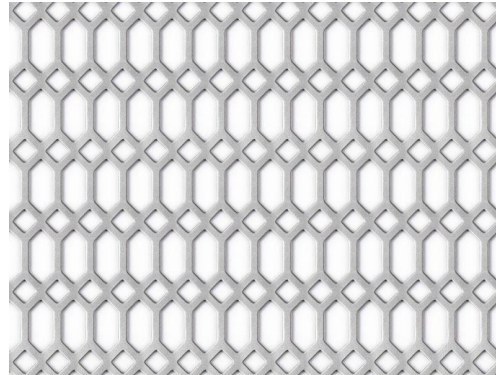
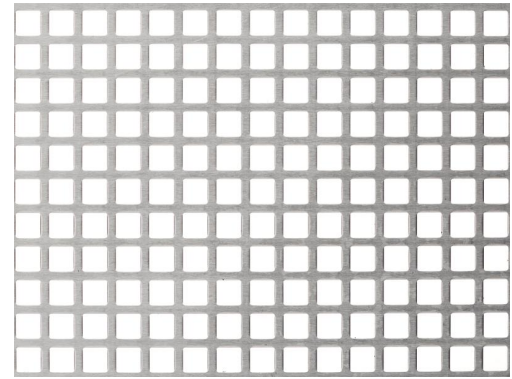
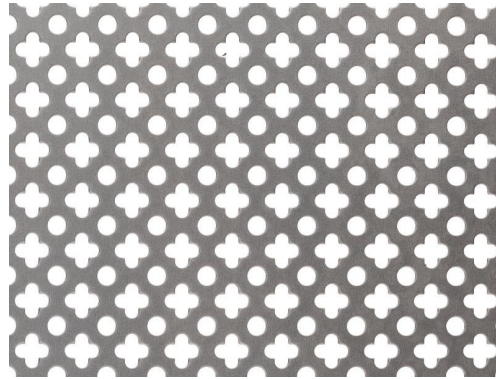
Good ventilation and light transmission performance.

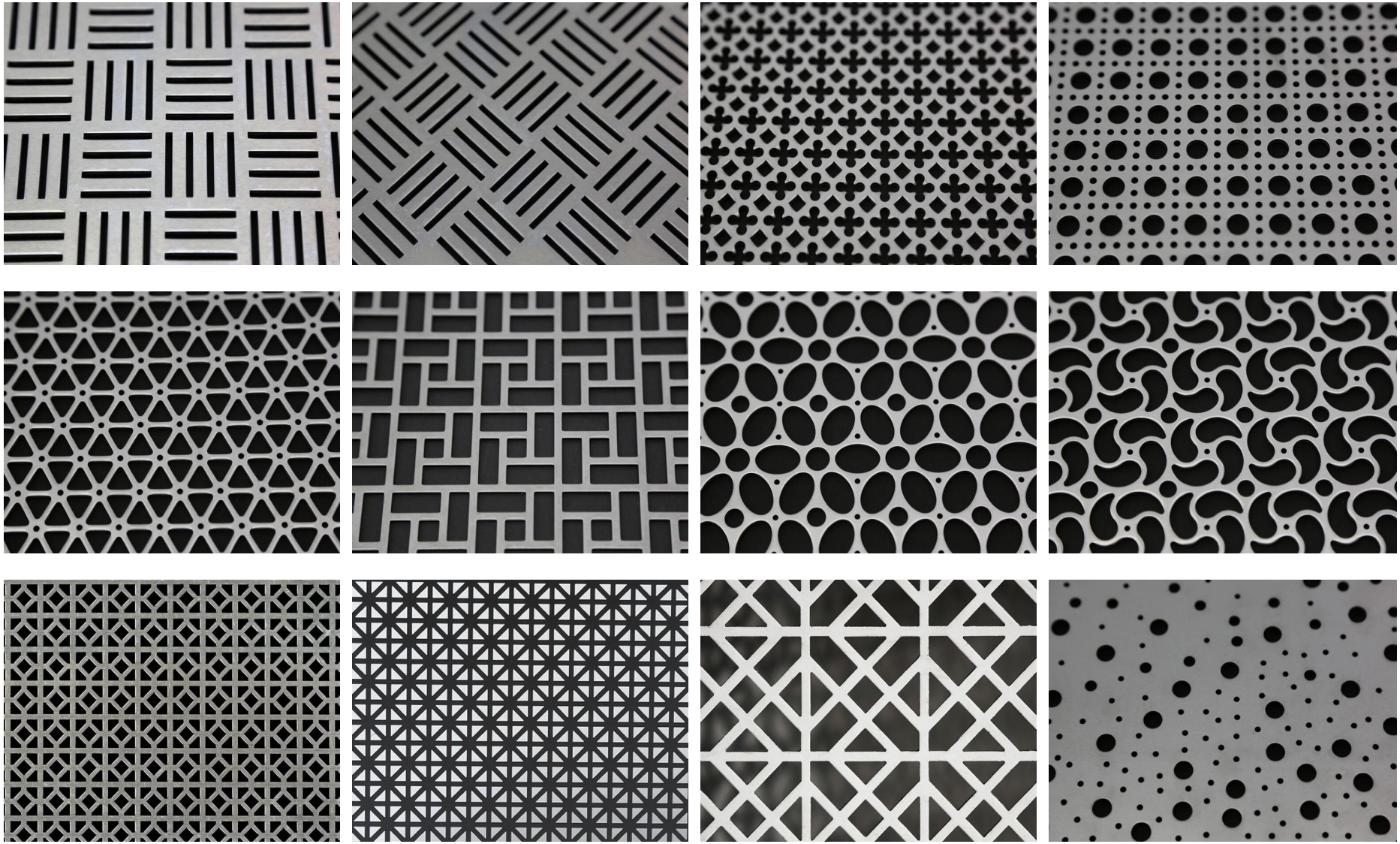
The structure helps to eliminate noise and reduce echo, create a good atmosphere for living.

Environmental protection, reduce energy consumption, the materials in the production process is lossless, saving costs.

Simple and beautiful appearance, in harmony with the surrounding environment.

Durable with longer lifespan.





# JUDA Decorative Perforated Metal Mesh

We offer the top range of Perforated Metal Mesh for our valued clients. These products are used in many fields in the market. All our products are manufactured using premium quality raw material and modern machinery that obtained from the reliable manufacturers of the market. Apart from this, we offer the facility of customization to customers as per their needs.

## Application:

### Thin perforated plates

Railways, public works equipment and agricultural machinery: interior fitouts, air vents, running boards, footstools ..

Equipment and industrial processes: wood industry, paper, foundry, chemical / petrochemical, food industry...

Energy and electrical: Solar panel holders, racks, lighting, sound, heating...

Environment: sorting, waste crushing, water treatment, acoustics...

Building industry: railings, suspended ceilings, partitions walls, floors, protection, closings...

### Thicker perforated plates

Equipment and industrial processes: food industry (trommel screens, filter press...)

Environment: waste crushing (wood industry, pneumatics...), washer plate, sorting...

Railways, public works equipment and agricultural machinery: interior trim, air vents, running boards, footstools...

Building industry: suspended ceilings, partitions walls, floors

